

GuideBuilder® 5

Managed Cloud Service

There is only one managed cloud service for electronic program guide metadata based on the award-winning, industry-leading GuideBuilder 5 platform. GuideBuilder Cloud provides broadcasters with a worry-free way to generate program guide metadata for all their DTV signals.

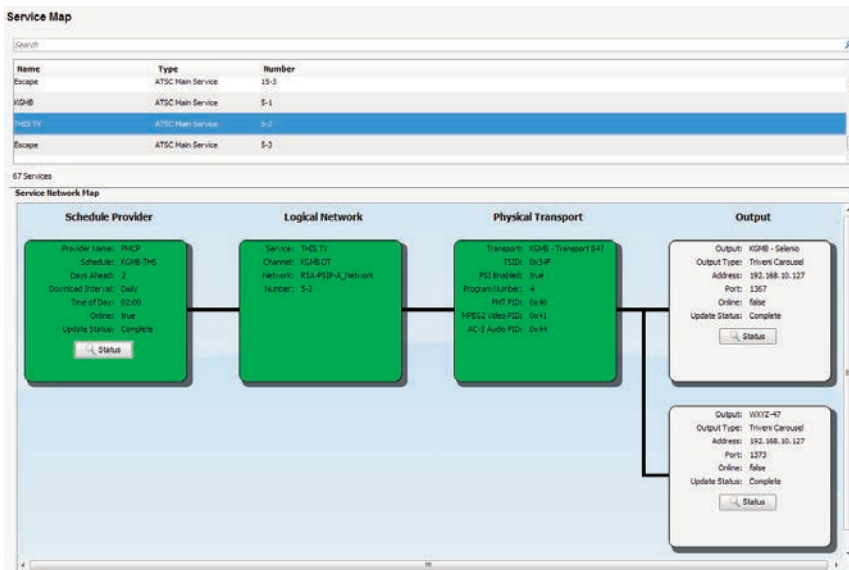
Reliable PSIP generation

GuideBuilder Cloud features centralized control and management capabilities, network-based PSIP carousel download, and web-based configuration and program editing applications.

This turnkey system seamlessly handles schedule listings for ATSC 1.0 signals and is ready for migration to IP-based ATSC 3.0, delivering program guides to TVs, mobile DTV-enabled PCs, smart phones, and tablets. Triveni Digital experts can set up GuideBuilder Cloud for a variety of configurations, ranging from low-power stations, duopolies, and multiple stations in group environments, providing flexible scalability as your network needs grow.

Cost-saving cloud-based EPGs

By reducing hardware infrastructure, GuideBuilder Cloud lowers broadcasters' power and operational expenses. Freed from maintaining hardware, software, and listing services, technical personnel can focus on more pressing tasks. This state-of-the-art managed service also includes free software updates as new features are added.

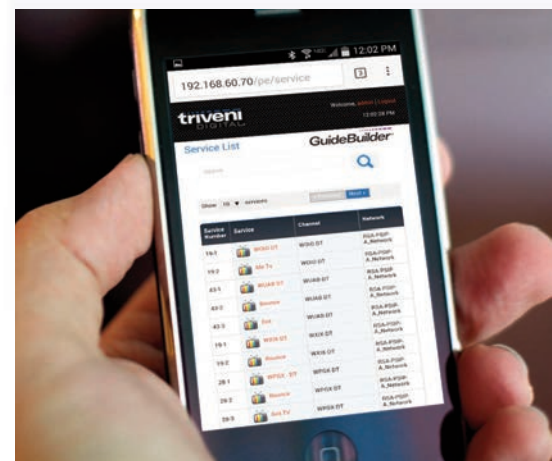


GuideBuilder Cloud manages program guide metadata from schedule ingests to DTV outputs.



Benefits

- Accurate metadata generation
- Central control and management
- Listing service inputs included
- Zero capital expenditures (CAPEX)
- Reduced operational costs (OPEX)
- Java-based configuration app
- Web-based program editor
- Support for dual broadcast chains
- Field-proven Linux-based reliability
- Free software updates
- 24/7 technical support
- Mobile web access



The GuideBuilder Cloud program editor can be accessed via mobile devices.



609.716.3535 | t
609.716.3503 | f
info@trivenidigital.com
trivenidigital.com

