

# StreamScope<sup>®</sup> EM-50

## Enterprise Manager

### The Video Quality Management Solution

The StreamScope<sup>®</sup> EM-50 enterprise manager is a centralized software solution for maintaining video quality of service (QoS) and FCC compliance throughout DTV enterprises. By helping to prevent problems that degrade service quality, the EM-50 reduces system downtime and customer service costs.

#### For quality and compliance assurance

The EM-50 networks with StreamScope transport stream monitors to provide continuous, real-time quality of service (QoS) updates about the hosts, ports, transport streams, and services in your DTV network. Using the drill-down dashboard pages and at-a-glance video walls of its web-based user interface, the root causes of local faults can be quickly isolated.

The Enterprise Monitoring module (EMm) displays live video thumbnails, system element QoS performance, dynamic QoS propagation charts, and custom network topology maps. Current and historical reports display complete details for sophisticated analyses.

#### With central control and mobile access

As part of your network control center, the EM-50 enables engineers and managers to configure alerts, email notices, and report subscriptions. As your DTV services expand, it's easy to add remote monitors and configure them from one central location. For video management on the go, the EM-50 user interface can be viewed on mobile devices.

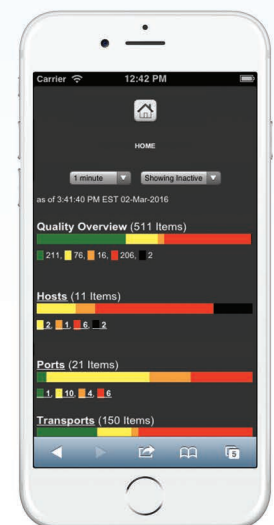


### BENEFITS

- Monitor video quality and regulatory compliance enterprise-wide
- Configure and manage remote TS monitors from a central location
- Drill-down to isolate and analyze the root causes of local faults
- Create custom alerts for QoS changes and offline services
- View user-friendly dashboards, video walls, reports and more
- Keep key personnel informed with automatic email notices and reports
- Monitor the network on the go with mobile apps
- Cut costs with a convenient SaaS model
- Get industry-leading customer service



The StreamScope EM-50 is a cost-effective way to monitor and manage video quality and regulatory compliance across your DTV network.



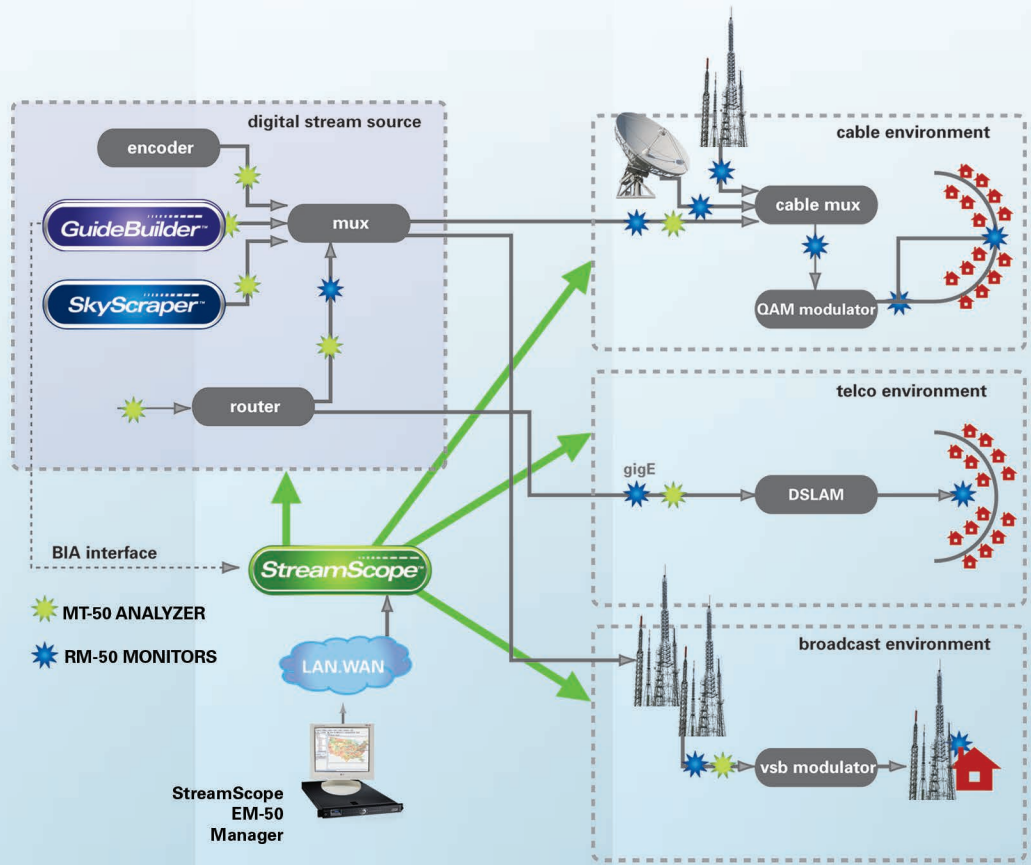
The EM-50 includes a mobile app for video monitoring on the go.

# StreamScope<sup>®</sup> EM-50

## Enterprise Manager

### KEY FEATURES

- Connect to networked StreamScope remote transport stream monitors
- Color-coded, drill-down dashboards, video walls, and system element summaries
- Centralized fleet management for configuring and upgrading remote TS monitors
- Custom alerts indicate QoS and other changes
- Detailed, interactive current and historical reports
- The Enterprise Monitoring module (EMm) includes real-time video thumbnails, rotating video wall, remote monitor statuses, QoS propagation charts, and network topology maps
- Centralized administration of custom alerts, emails and text messages, report subscriptions, user accounts, and more
- Detailed logs and archives for trend analysis
- Web and mobile access



### USER INTERFACE SAMPLES

The user interface consists of several key components:
 

- Enterprise QoS overview:** A dashboard with a 'Quality Overview (388 Items)' bar chart and a grid of host status cards. The cards show IP addresses (e.g., 192.168.20.29) and their QoS percentages (e.g., 0%, 92%, 0%, 92%).
- Enterprise QoS statistics:** A detailed view of QoS data with a 'Showing Inactive' filter and a '1 minute' refresh rate. It lists categories like 'Hosts (9 Items)', 'Ports (7 Items)', 'Transports (91 Items)', and 'Services (281 Items)' with corresponding bar charts.
- Rotating video wall:** A central display showing a grid of video thumbnails from various services, including ABC, NBC, and NJTV-HD. It includes a 'Live Monitor' and 'Video Wall' tab.
- Live services monitor:** A detailed view of a specific service (e.g., Service 01) showing its status (Available: 35, Pending: 0, Net Available: 349) and a 'Host' video feed.

2GC031805\_a



Triveni Digital  
 777 Alexander Rd, Suite 101, Princeton, NJ 08540  
 t: 609.716.3535 | f: 609.716.3503 | info@trivenidigital.com  
 TriveniDigital.com

Live services monitor

