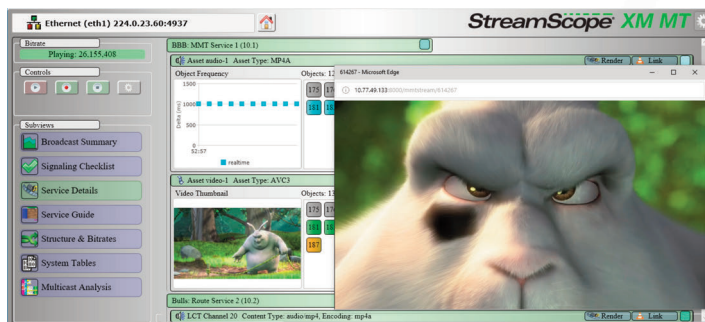
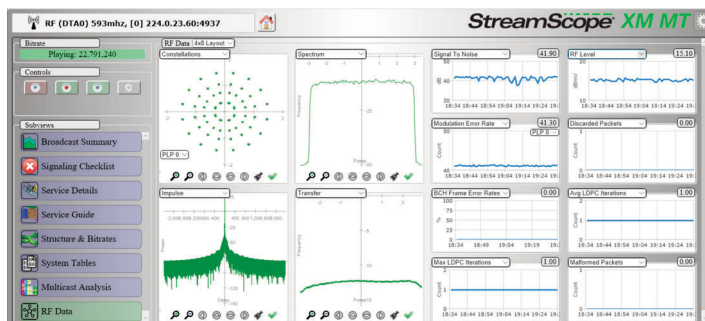


ATSC 3.0 Broadcast Stream Analyzer

The TV industry's most advanced stream monitoring system, the award-winning StreamScope[®] XM MT analyzes all ATSC 3.0 standards, including ROUTE and MMTP. Using StreamScope XM MT, engineers can quickly analyze ATSC 3.0 streams and data structures to detect, isolate, and resolve issues. Developed by the company that helped create ATSC 3.0, StreamScope XM MT is essential equipment for ATSC 3.0 trials and early deployments.



Render video and audio streams in real-time.



View constellation, spectrum, impulse, SNR, MER, and other RF graphs.



Analyze multicast routes, channels, intervals, system tables, and more.

KEY BENEFITS

- Monitors ROUTE/MMTP, STLTP, and RF
- Renders real-time video and audio streams
- Displays object statuses and frequencies
- Maps and validates data structures
- Eases the transition to ATSC 3.0 broadcasting

KEY FEATURES

- State-of-the-art ATSC 3.0 analysis
- RF, Ethernet, and recorded file inputs
- ROUTE, MMTP, and STLTP support
- Constellation, spectrum, and other RF graphs
- Received, active, and expired stream objects
- Multicast, video, audio, and data bitrates
- Multicast input, service, and stream analysis
- System table details, locations, and intervals
- Signaling, video, audio, and data validation
- Program guide schedules and details
- User management for web access
- Video thumbnails and rendering
- File manager for recorded PCAP files
- Color mapping for at-a-glance tracking
- Unix-based client-server architecture

"StreamScope XM makes it practical for broadcasters to launch early deployments and trials of ATSC 3.0, ushering in a new era of digital television."

- TV Technology



Triveni Digital, Inc.
777 Alexander Drive | Suite 101 | Princeton, NJ 08540
t: 609.716.3535 | f: 609.716.3503 | info@trivenidigital.com

TriveniDigital.com

2GC 031802_a

