

GuideBuilder™ 3.0



**PSIP
Generation System
for DTV Broadcasters
and Cable**

triveni
DIGITAL®

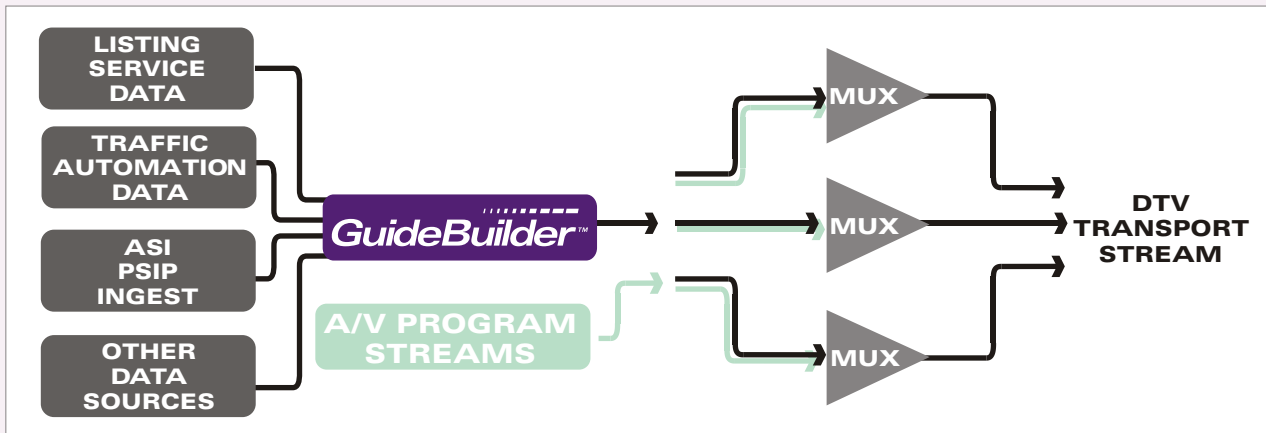
GuideBuilder Makes PSIP Easy

The GuideBuilder™ system generates accurate Program and System Information Protocol (PSIP) data and provides an intuitive interface for managing program event information. PSIP is the foundation for ATSC digital television transport streams and is now mandated by the FCC—errors in PSIP data can cause serious problems, such as DTV tuners not finding your channel, closed captions not appearing, or programs not being listed in electronic program guides (EPGs). With cable carriage of OTA broadcasts, PSIP also is growing in importance for digital cable.

GuideBuilder can import program data from many different sources, including listing services and traffic systems. Local or customized data can be manually entered into the system as well. The GuideBuilder system

helps you retain your branding in EPGs by grouping all your offerings under your existing channel number, regardless of the frequency assigned to the digital broadcast, protecting channel identity in a competitive marketplace.

Versatile GuideBuilder is the industry leader in PSIP generation and management, and is now available at three levels—Lite, Basic and Pro—to cover the entire value spectrum while ensuring compliance with ATSC guidelines.



GuideBuilder™ 3.0

HIGHLIGHTS

- Meets the FCC PSIP requirements
- Intuitive user interface eliminates the need for extensive knowledge of ATSC standards
- Flexible editing options accommodate overruns and last-minute changes
- Automatic data importing is compatible with many input sources and provides scheduled periodic updates
- Flexible architecture helps you distribute effort conveniently within your organization
- Supports wide range of configurations from single stations to centralcasting PSIP from a single operations center to multiple stations
- Consistent PSIP and PSI generation prevents errors in the transport stream
- PSIP generation is now a core broadcast function, GuideBuilder supports high reliability configurations
- Open-system development and integration makes GuideBuilder compatible with all popular MPEG-2 encoders and multiplexers

Navigating the Schedule

Program Data at a Glance

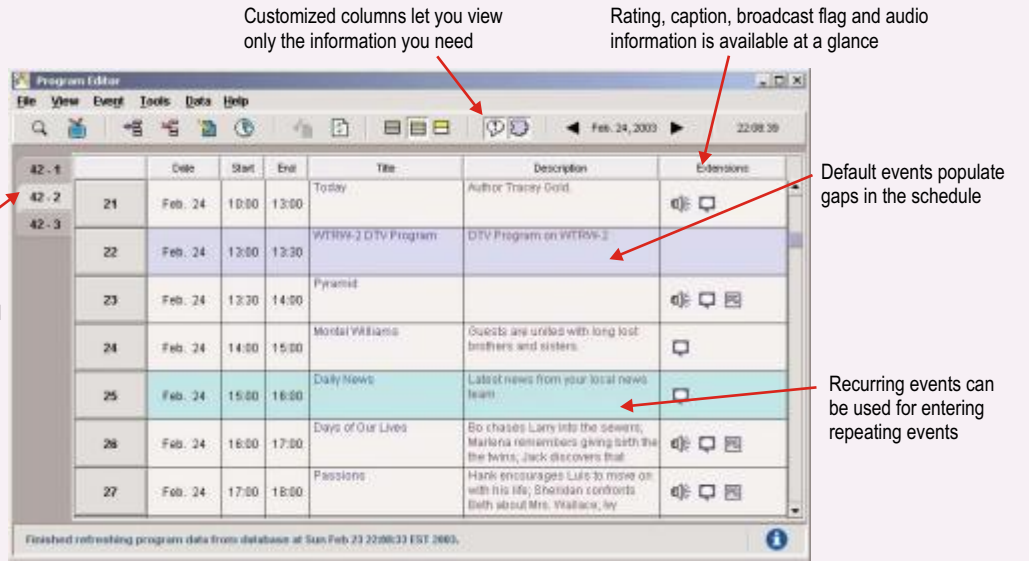
The Program Editor window presents program data in an easy-to-understand format. Search tools and intuitive displays make it simple to navigate through complicated program listings.



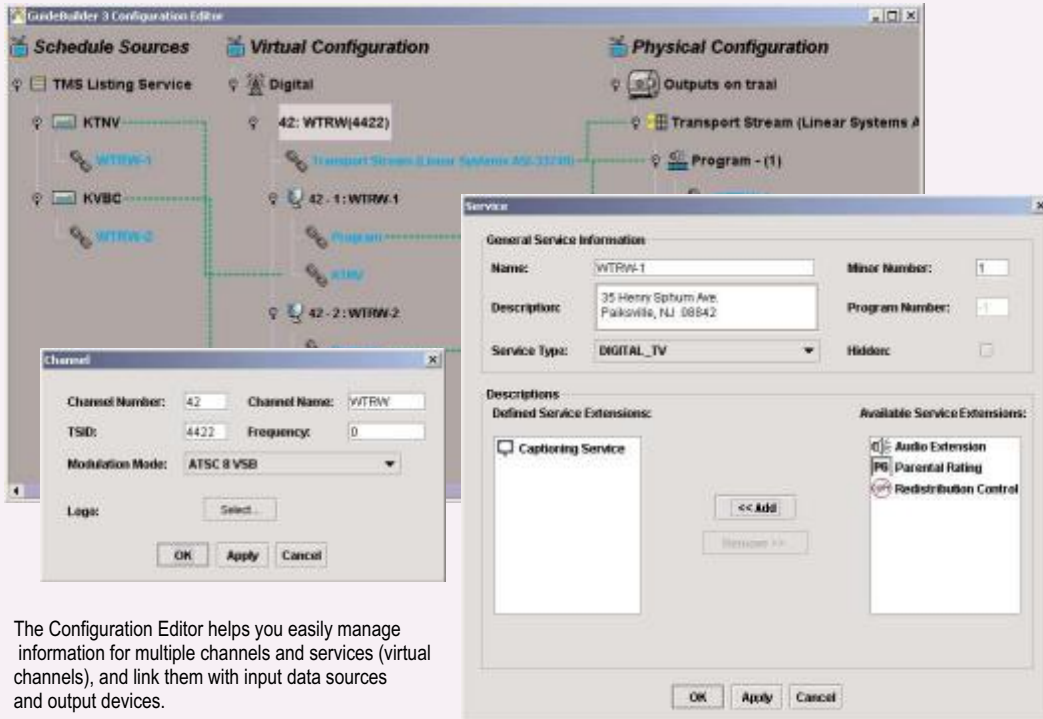
Last Minute Edits and Overruns

When program events change, you can easily edit manually. The Event Overrun feature changes the end time of a program when it overruns the schedule, and automatically shifts subsequent events.

If events run over, update the event schedule with the Event Overrun feature.



The GuideBuilder Program Editor provides comprehensive program data in one window.



The Configuration Editor helps you easily manage information for multiple channels and services (virtual channels), and link them with input data sources and output devices.



Search Options

The "FindText" search option makes it easy to navigate through program data. Search for program names or descriptions by keywords.

Quickly search through event names and descriptions with the Find Text feature.

Multiple Channels and Services

GuideBuilder has all the power and capability you need to edit and manage multiple channels and create detailed service descriptions for robust and informative EPGs.

Managing the Data Flow

Continuous Playout with Constant Updates

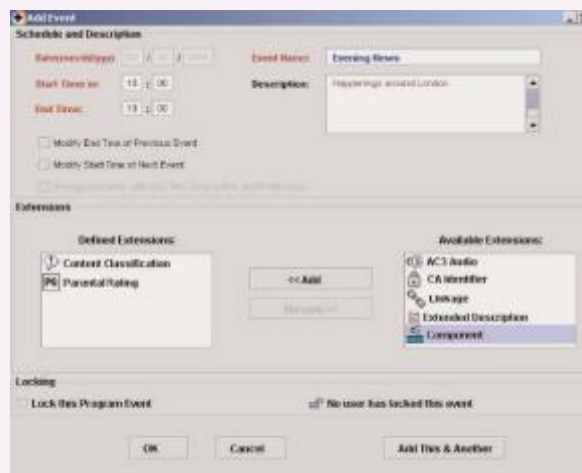
GuideBuilder is designed to ensure consistent PSIP data generation and continuous playout of data.

The client-server architecture of GuideBuilder supports centralcasting configurations and provides fault-tolerant features, including the ability to send out data from an internal carousel in a multiplexer. This allows the multiplexer to continue sending data if the GuideBuilder machine is disconnected.

Integrated with a Wide Range of Broadcast Equipment

GuideBuilder has been developed with an open system approach, providing a high-performance PSIP bit-stream generator that can be integrated with the following vendors:

- Harris
- Harmonic
- Tandberg
- Motorola
- Tiernan/Radyne Comstream
- SkyStream
- Thomson Broadcast
- Logic Innovations
- BigBand Networks
- Terayon
- Thales



The Add Event window allows you to specify detailed event information and produce accurate PSIP program data.

Easily Add Events

The Add Event window lets you add events to the program schedule quickly and accurately. Detailed entry options allow you to describe audio, captioning, broadcast flag and rating information for all events in a virtual channel, and to create specific settings for individual events.

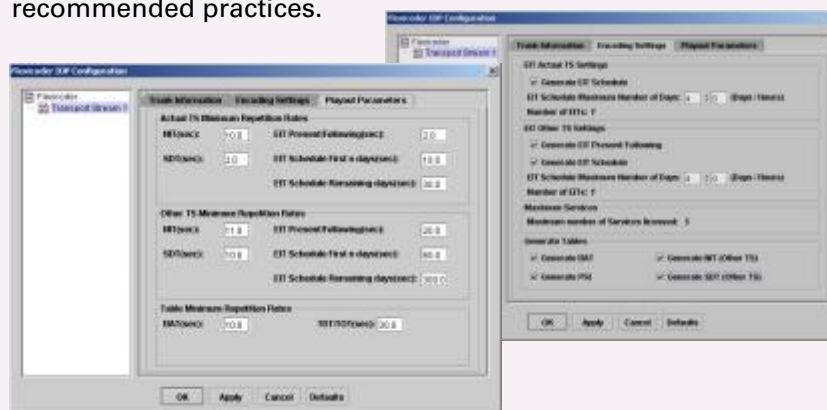
Import Data with One Click

Import data from any of these sources with a single click:

- Tribune Media Services (TMS)
- TV Guide
- ATSC PMCP
- Generic
- OSI
- ProTrack
- HarrisTraffic
- Scout
- Storer
- DecisionMark
- VCI
- PSIP Ingest

Advanced Encoding Controls

The output encoding interface lets you control the playout rates to keep them compliant with ATSC DTV standards and recommended practices.



The Playout Parameters and Encoding Parameters allow you to control cycle times, playout rates, number of EITs, PIDs and bit rates, providing complete control over your bandwidth usage.

Or set up automatic periodic updates for a hands-off approach. Third-party data formats can also be easily translated and then imported to the GuideBuilder system.

Model Configurations

Available Features		Lite	Basic	Pro
PSIP Features	Core PSIP tables	✓	✓	✓
	Ability to generate PAT and PMT PSI tables	✓	✓	✓
	NCTA-CEA PSIP Agreement	✓	✓	✓
	ATSC PSIP Recommended Practice		✓	✓
	Full, dynamic PSIP			✓
Program Information	Days of EPG information	16	16	16
	Program event names	✓	✓	✓
	Extended text descriptions		✓	✓
	Dynamic captioning, audio, ratings and redistribution control descriptors	✓	✓	✓
	"Hide Guide" support	✓	✓	✓
	Digital services per stream	1	3	Unlimited
	Analog services per stream	1	1	1
	Additional digital and analog services	*	*	*
Input	Manual event editing plus choice of TMS, TV Guide, DecisionMark or PMCP	✓	✓	✓
	Add choice of other input interfaces [†] , for 2 nd included interface			✓
	PSIP Ingest	*	*	*
	Additional traffic and listing import interfaces	*	*	*
	Prioritization of multiple input sources	✓	✓	✓
	Time Code interface	*	*	*
Output	ASI, Ethernet, or RS-422 output	✓	✓	✓
	Synchronization with multiplexer or encoder	*	*	*
	Output transport streams standard	1	1	1
	Optional extra transport streams available			*
Workflow	Remote user interfaces	✓	✓	✓
	Time-saving event overrun management, recurring events, and default background events in manual editing interface	✓	✓	✓
	Localized user interfaces for non-English languages	*	*	*
	Field upgradeable to higher model	*	*	n/a

All GuideBuilder models provide compliance to the FCC PSIP requirements, DTV channel tuning information, up to 16 days of schedule information plus dynamic description of closed captioning, audio, broadcast flag, and V-chip ratings for program events.

GuideBuilder Lite also provides program event names for display in EPG; an Editing interface, for manual entry and editing of event information; and an interface for importing information from TMS, TV Guide, DecisionMark, or PMCP.

GuideBuilder Basic adds full support for the ATSC PSIP Recommended Practice, including extended event descriptions. Data input automation and integration with other broadcast and programming systems are available.

GuideBuilder Pro offers advanced capabilities, including additional choices for the 2nd included input interface; full, dynamic PSIP generation; unlimited services; and the option for multiple output transport streams.

✓ Standard feature included with model

* Option available to add to standard configuration

† Available interfaces include Scout, Storer, Harris Traffic, ProTrack, Generic, OSI, VCI

Technical Specifications

General

Operating system	Windows® 2000
AC power input	250W@ 115/230 VAC, 50/60Hz

Data Communications

DVB ASI	75 BNC connector Max send: +5V, 220 mA Typical send: +12V, 75 mA / -12V, 7.2 mA Max bitrate: 270 Mbps Typical bitrate: 250 Kbps
RS-422	Single channel synchronous HDLC Sync clock rate 250 Kbps (configurable) Typical bitrate - 120 Kbps
10/100 BaseT Ethernet	2 x RJ-45 connection
Serial Port	9 pin
USB	1 front and 1 rear

Physical

Width	17.6" (447 mm) - fits 19" standard rack
Height	1.67" (43mm) - 1RU
Depth	30" (762 mm)
Weight	35 lbs (16 kg)

Operating Environment

Temperature	50°-95° F (10°-35° C)
Humidity	8% - 80% RHNC

Options

- Dual power supply
- Raid 1



Triveni Digital, Inc.
40 Washington Road
Princeton Junction, NJ 08550 USA
Tel: 609-716-3500
Fax: 609-716-3503

Web: www.TriveniDigital.com
E-mail: info@TriveniDigital.com