

GuideBuilder™

PSIP Generation System for ATSC DTV Broadcasters

RELEASE: 3.0

MODELS: LITE, BASIC, PRO

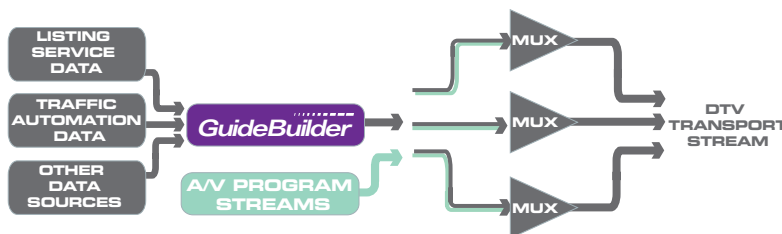


GuideBuilder Makes PSIP Easy

The GuideBuilder™ system generates accurate Program and System Information Protocol (PSIP) data and provides an intuitive interface for managing program event information. PSIP is the foundation for ATSC digital television transport streams—errors in PSIP data can cause serious problems, such as DTV tuners not finding your channel, closed captions not appearing, or programs not being listed in electronic program guides (EPGs).

GuideBuilder can import program data from many different sources, including listing services and traffic systems. Local or customized data can be manually entered into the system as well. The GuideBuilder system helps you retain your branding in EPGs by grouping all your offerings under your existing channel number, regardless of the frequency assigned to the digital broadcast, protecting channel identity in a competitive marketplace.

Versatile GuideBuilder is the industry leader in PSIP generation and management, and is now available at three levels—Lite, Basic and Pro—to cover the entire value spectrum while ensuring compliance with ATSC guidelines.



HIGHLIGHTS

- **Intuitive user interface** eliminates the need for extensive knowledge of ATSC standards
- **Flexible editing options** accommodate overruns and last-minute changes
- **Automatic data importing** is compatible with many input sources and provides scheduled periodic updates
- **Flexible architecture** helps you distribute effort conveniently within your organization
- **Data prioritization** integrates data from multiple sources, with priority management and conflict resolution
- **Consistent PSIP and PSI generation** prevents errors in the transport stream
- **Powerful bandwidth optimization** controls broadcast playout rates
- **Open-system development and integration** makes GuideBuilder compatible with all popular MPEG-2 encoders and multiplexers

triveni
DIGITAL®
Forging the Future of Digital Television

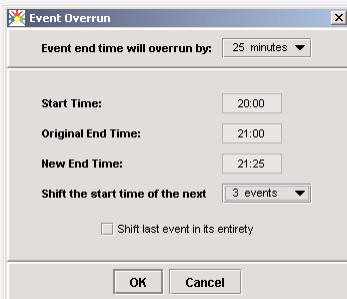
NAVIGATING THE SCHEDULE

Program Data at a Glance

The Program Editor window is the central command hub of GuideBuilder 3.0, and presents program data in an easy-to-understand format. Search tools and intuitive displays make it simple to navigate through complicated program listings.

Last Minute Edits and Overruns

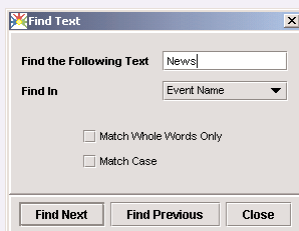
When program events change, you can easily edit manually. The Event Overrun feature changes the end time of a program when it overruns the schedule, and automatically shifts subsequent events.



If events run over, update the event schedule with the Event Overrun feature.

Search Options

The "Find Text" search option makes it easy to navigate through program data. Search for program names or descriptions by keywords.

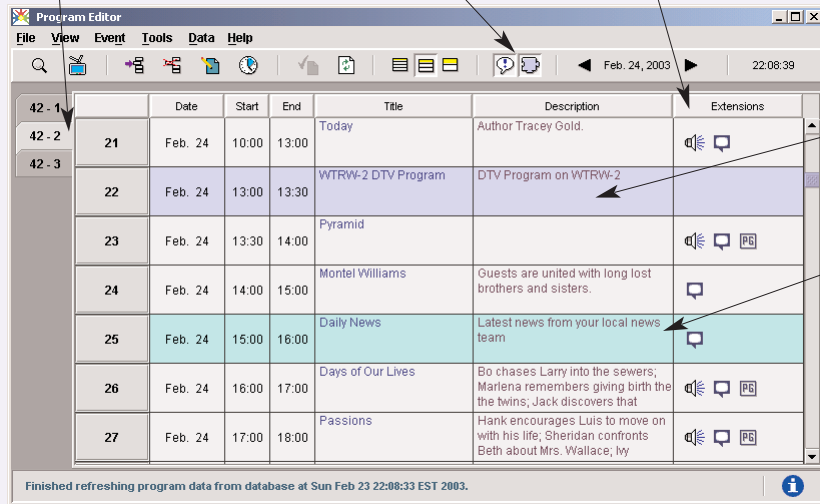


Quickly search through event names and descriptions with the Find Text feature.

Tabbed pages display events for each virtual channel

Customized columns let you view only the information you need

Rating, caption, and audio information is available at a glance



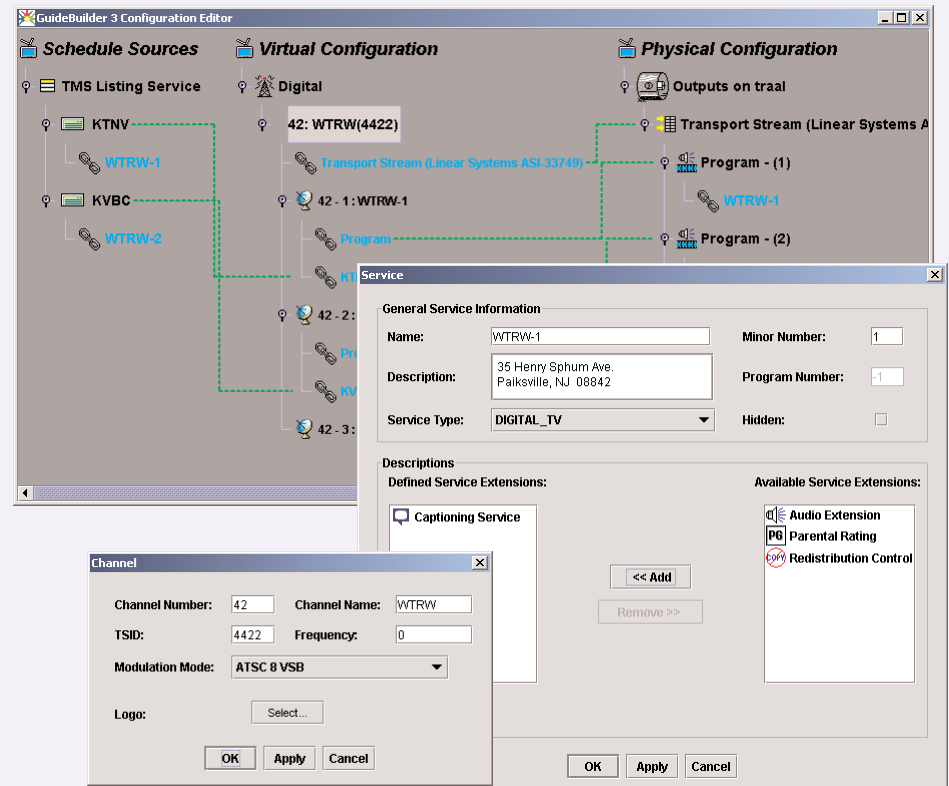
Default events populate gaps in the schedule

Recurring events can be used for entering repeating events

The GuideBuilder Program Editor provides comprehensive program data in one window.

Multiple Channels and Services

GuideBuilder has all the power and capability you need to edit and manage multiple channels and create detailed service descriptions for robust and informative EPGs.

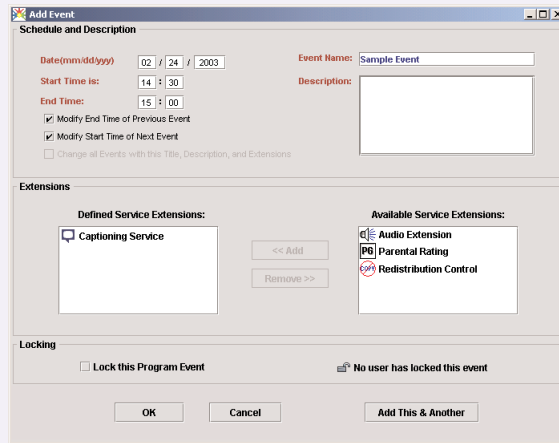


The Configuration Editor helps you easily manage information for multiple channels and services (virtual channels), and link them with input data sources and output devices.

Easily Add Events

The Add Event window lets you add events to the program schedule quickly and accurately.

Detailed entry options allow you to describe audio, captioning, broadcast flag and rating information for all events in a virtual channel, and to create specific settings for individual events.



The Add Event window lets you specify detailed event information and produce accurate PSIP program data.

Import Data with One Click

Import data from any of these sources with a single click:

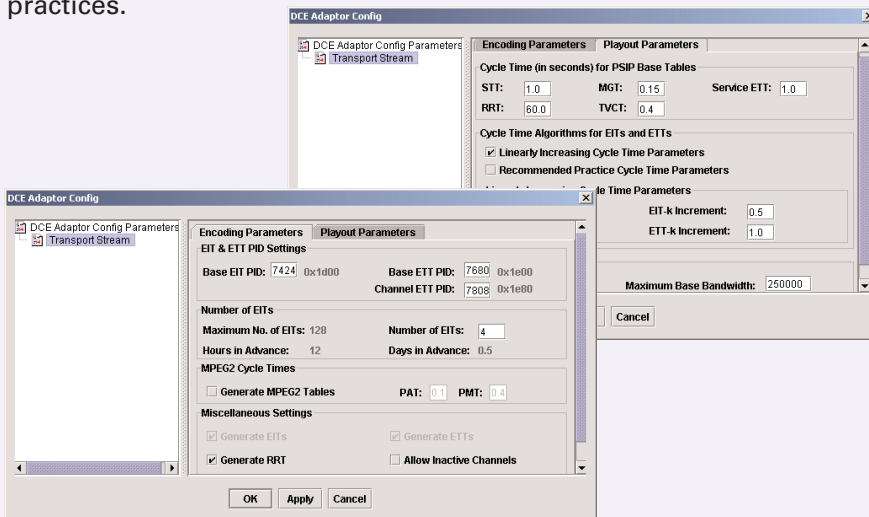
- Tribune Media Services (TMS)
- PBS National database (NOLA)
- Encoda Systems
- ProTrack
- Scout
- Storer

Or set up automatic periodic updates for a hands-off approach.

Third-party data formats can also be easily translated and then imported to the GuideBuilder system.

Advanced Playout Engine Controls

The Playout Parameter interface lets you control the playout rates to keep them compliant with ATSC DTV standards and recommended practices.



The Playout Parameters and Encoding Parameters let you control cycle times, playout rates, and bit rates, providing complete control over your bandwidth usage.

MANAGING THE DATA FLOW

Continuous Playout with Constant Updates

GuideBuilder is designed to ensure consistent PSIP data generation and continuous playout of data. The Commit function ensures that data is not played out from the system until the user has approved it.

The client-server architecture of GuideBuilder supports central-casting configurations and provides fault-tolerant features, including the ability to send out data from an external playout engine. This allows the playout engine to continue sending data if the GuideBuilder machine is disconnected.

Integrated with a Wide Range of Broadcast Equipment

GuideBuilder has been developed with an open system approach, providing a high-performance PSIP bit-stream generator that can be integrated with the following vendors:

- Harris
- Harmonic
- Tandberg
- Leitch AgileVision
- Motorola
- Tiernan/Radyne Comstream
- SkyStream
- Thomson Broadcast
- Logic Innovations
- BigBand Networks
- Terayon

MODEL CONFIGURATIONS

Available Features		Lite	Basic	Pro
PSIP Features	Core PSIP tables	✓	✓	✓
	Ability to generate PAT and PMT PSI tables	✓	✓	✓
	NCTA-CEA PSIP Agreement	✓	✓	✓
	ATSC PSIP Recommended Practice		✓	✓
	Full, dynamic PSIP			✓
Program Information	Days of EPG information	1½	3	16
	Program event names	✓	✓	✓
	Extended text descriptions		✓	✓
	Dynamic captioning, audio, ratings and redistribution control descriptors	✓	✓	✓
	"Hide Guide" support	✓	✓	✓
	Digital services per stream	1	3	Unlimited
	Analog services per stream	1	1	1
	Additional digital and analog services	*	*	*
Input	Choice of manual event editing or Tribune Media Services (TMS) listing import interface	✓	✓	✓
	Add manual editing to TMS listing interface	*	*	*
	Add TMS listing interface to manual editing	*	*	*
	Additional traffic and listing import interfaces (Scout, Storer, Encoda, ProTrack)		*	*
	Prioritization of multiple input sources	✓	✓	✓
	Time Code interface	*	*	*
Output	ASI, Ethernet, or RS-422 output	✓	✓	✓
	Synchronization with multiplexer or encoder	*	*	*
	Output transport streams standard	1	1	1
	Optional extra transport streams available			✓
Workflow	Remote user interfaces	✓	✓	✓
	Time-saving event overrun management, recurring events, and default background events in manual editing interface	✓	✓	✓
	Localized user interfaces for non-English languages	*	*	*
	Field upgradeable to GuideBuilder Pro	*	*	n/a

✓ Standard feature included with model

* Option available to add to standard configuration

All GuideBuilder models provide DTV channel tuning information, plus dynamic description of closed captioning, audio, broadcast flag, and V-chip ratings for program events.

GuideBuilder Lite also provides program event names for display in EPG, and the choice of Editing interface, for manual entry and editing of event information, or Listing interface, for importing information from TMS.

GuideBuilder Basic adds full support for the ATSC PSIP Recommended Practice, including extended event descriptions. Data input automation and integration with other broadcast and programming systems available.

GuideBuilder Pro offers additional advanced capabilities, including full, dynamic PSIP generation, unlimited services, up to 16 days of programming information, and the option for multiple output transport streams.

TECHNICAL SPECIFICATIONS

	Feature	Specification
General	Operating system	Windows® NT or Windows® 2000
	AC power input	250W2@115/230 VAC, 50/60Hz
Data Communications	DVB ASI	75 Ω BNC connector Max send: +5V, 220 mA Typical send: +12V, 7.5 mA / -12V, 7.2 mA Max bitrate: 270 Mbps Typical bitrate: 250 Kbps
	RS-422	Single channel synchronous HDLC Sync clock rate 250 Kbps (configurable) Typical bitrate - 120 Kbps
	10/100 BaseT Ethernet	RJ-45 connection
	Modem	56k internal (optional)
	One parallel port	25-pin D
Physical	Width	17" (430 mm) - fits 19" standard rack
	Height	3.48" (88mm) - 2RU
	Depth	18" (460 mm)
	Weight	30 lbs (16.7 kg)
Operating Environment	Temperature	32°-122° F (0°-50° C)
	Humidity	10% - 90% RHNC

Contact Triveni Digital:

40 Washington Road
Princeton Junction, New Jersey 08550 USA
Telephone: 609.716.3500 Fax: 609.716.3503

Web: www.TriveniDigital.com E-mail: info@TriveniDigital.com

Optional Components

- 15" TFT LCD 1024 x 768 monitor
- Rackmount keyboard and touchpad
- Desktop "tower" version available
- Rack-mounting rails and hardware

triveni
DIGITAL®

Forging the Future of Digital Television